

The Male Reproductive System

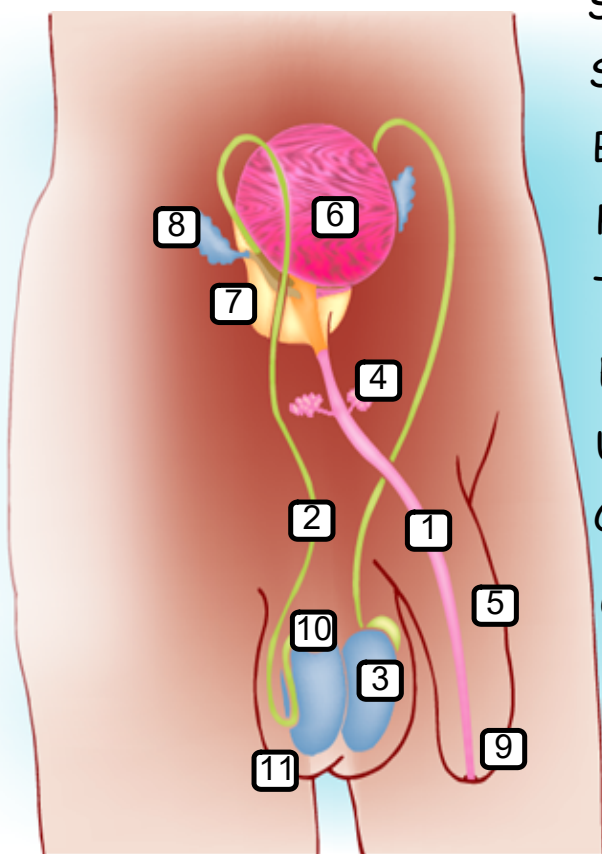


- 1) **Scrotum** - a sack of skin that holds the testicles; can expand or contract to maintain the temperature of the testicles
- 2) **Testicles** - most men have two; where testosterone and sperm are made
- 3) **Epididymus** - where sperm cells are stored and where they mature
- 4) **Vas deferens** - transports sperm from the epididymus to the urethra
- 5) **Seminal Vesicles** - provide a sugar-rich fluid that provides the sperm with energy; this mixture of sperm and fluid is called *semen*
- 6) **Prostate Gland** - contributes additional fluid to nourish the sperm
- 7) **Cowper's Gland** - add a slippery fluid to semen to protect the sperm from the acidic environment of the urethra and vagina
- 8) **Urethra** - the tube that transports semen and urine
- 9) **Penis** - the male organ used for sexual intercourse; contains special chambers that fill with blood when a male is aroused, causing it to become rigid and erect (*an erection*); both semen and urine exit the male body through the penis (*an ejaculation* is when semen exits the body during an orgasm)
- 10) **Glans** - the head of the penis; very sensitive with lots of nerve endings; source of sexual pleasure
- 11) **Sperm** - the male reproductive cell; unites with egg to create a baby

The Female Reproductive System



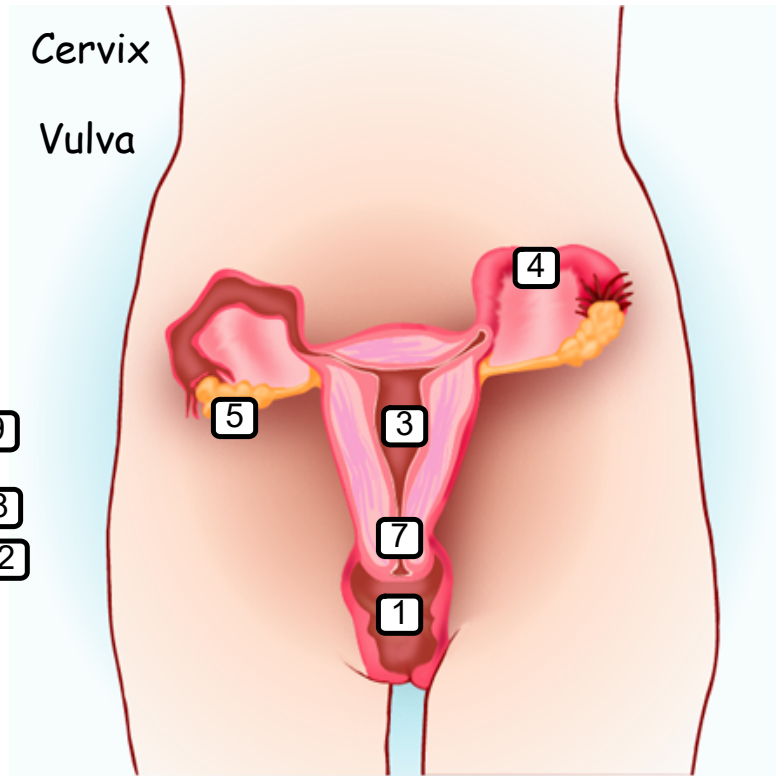
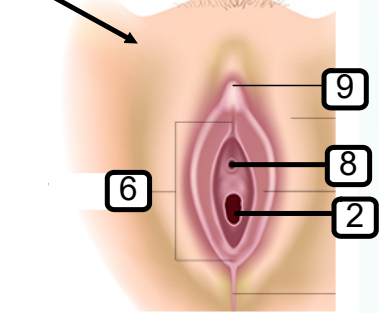
- 1) **Ovaries** - where eggs are stored until their release - one per month; also produces hormones
- 2) **Fallopian Tubes** - two tubes that connect the ovaries to the uterus
- 3) **Uterus** - the womb; where the baby grows; located very low in the abdomen
- 4) **Cervix** - narrow passageway between vagina and uterus
- 5) **Vagina** - used for menstration, intercourse and childbirth; leads to other inner reproductive organs
- 6) **Vulva** - the external genitals
- 7) **Labia** - there is an outer *labia majora* and inner *labia minora*; these are folds of skin that protect the inner reproductive organs
- 8) **Hymen** - a thin membrane that surrounds the opening of the vagina; can tear during intercourse and cause bleeding
- 9) **Clitoris** - small and very sensitive; located just above the opening of the vagina; source of sexual pleasure
- 10) **Ovum**- an egg cell; unites with a sperm cell to create a baby



- Scrotum
- Seminal vesicles
- Bladder
- Penis
- Testicles
- Epididymus
- Urethra
- Cowper's Glands
- Glans
- Prostate
- Vas deferens

Ovary Vagina Urethra
Labia Clitoris Cervix
Hymen Uterus Vulva
Fallopian Tubes

10 toute la diagramme



Answers

Male

- 1) Urethra
- 2) Vas deferens
- 3) Testicles
- 4) Cowper's Glands
- 5) Penis
- 6) Bladder
- 7) Prostate
- 8) Seminal Vesicle
- 9) Glans
- 10) Epididymus
- 11) Scrotum

Female

- 1) Vagina
- 2) Hymen
- 3) Uterus
- 4) Fallopian Tubes
- 5) Ovary
- 6) Labia
- 7) Cervix
- 8) Urethra
- 9) Clitoris
- 10) Vulva